



СОСНОВЫЙ БОР

Рублево-Успенское шоссе, 23 км

Дом

1100 м²

43.28 сот

без отделки

6 спален

Классика

Лесной участок

Вентиляция

Блок для персонала

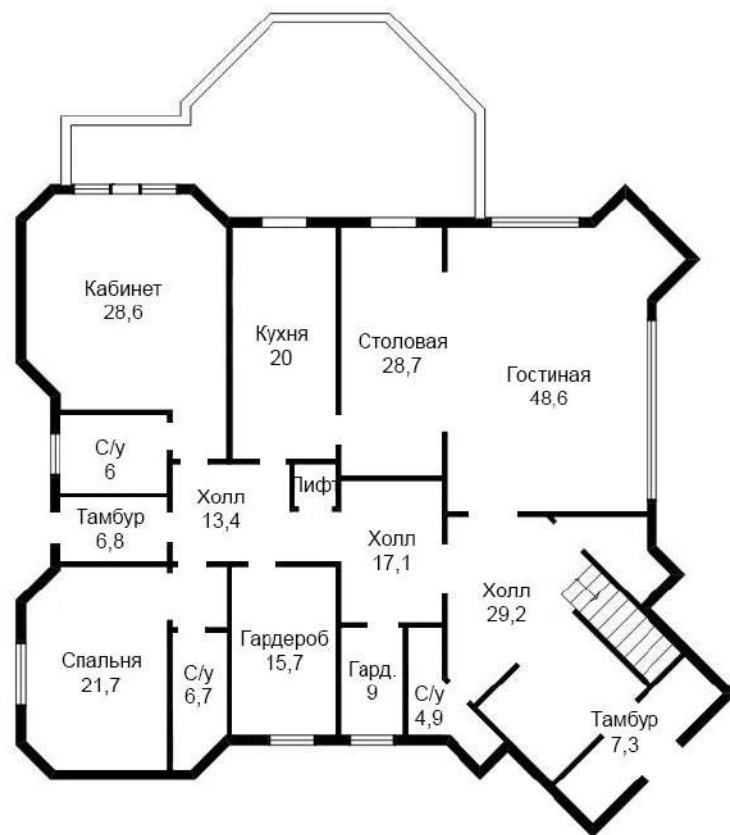
2 400 000 \$

ПЛАНИРОВКА



ПЛАНИРОВКА

Этаж 1



ПЛАНИРОВКА

Этаж 2





1100 м² / 43.28 сот / 6 спален



1100 м² / 43.28 сот / 6 спален



1100 м² / 43.28 сот / 6 спален

A photograph showing a log cabin under construction in a residential development. The cabin is made of dark brown logs and has a steep, gabled roof with grey shingles. It is situated between two modern, multi-story buildings. The building on the left has a facade of dark grey bricks with white decorative panels. The building on the right is white with dark grey accents and ornate white moldings. In the background, there are tall pine trees. The ground in front of the cabin is a mix of dirt and concrete, with some construction materials and debris scattered around. A blue banner is overlaid at the bottom of the image, containing text in Russian.

1100 м² / 43.28 сот / 6 спален



1100 м² / 43.28 сот / 6 спален



1100 м² / 43.28 сот / 6 спален



1100 м² / 43.28 сот / 6 спален



1100 м² / 43.28 сот / 6 спален



1100 м² / 43.28 сот / 6 спален



1100 м² / 43.28 сот / 6 спален



1100 м² / 43.28 сот / 6 спален



1100 м² / 43.28 сот / 6 спален



1100 м² / 43.28 сот / 6 спален

A close-up photograph of a dark grey, textured wall. The wall has a brick-like pattern with visible mortar lines. The texture is rough and uneven, with some areas appearing more worn or discolored than others. The lighting is somewhat dim, highlighting the irregularities of the surface.

1100 м² / 43.28 сот / 6 спален



1100 м² / 43.28 сот / 6 спален

The image shows the exterior of a building under construction. The facade features a combination of dark grey bricks and light-colored stone blocks. A prominent architectural element is a large, multi-tiered stone cornice or overhang. To the left, a wooden structure, possibly a roof or balcony, is visible. The overall scene is set against a backdrop of green trees.

1100 м² / 43.28 сот / 6 спален



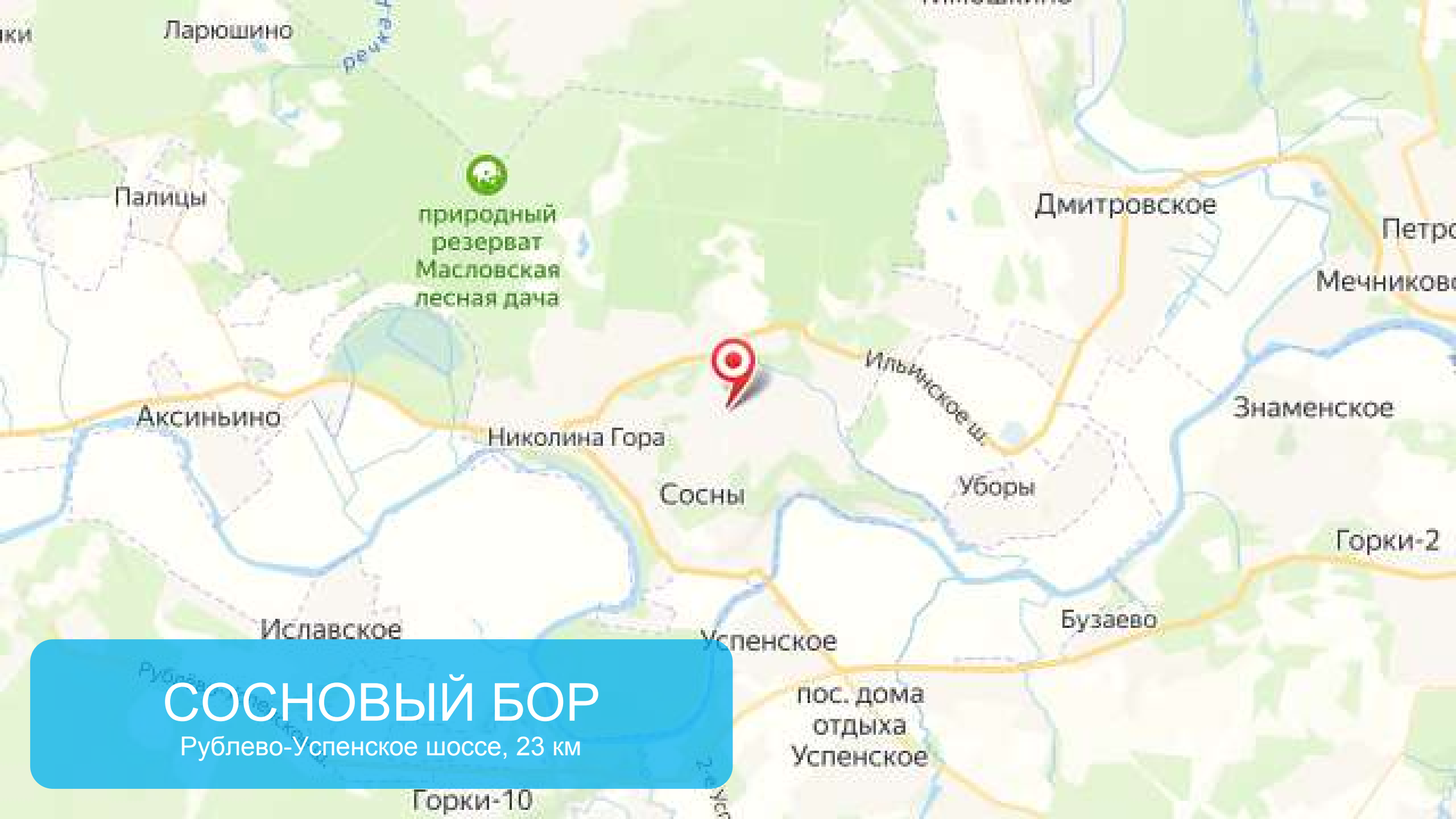
1100 м² / 43.28 сот / 6 спален



1100 м² / 43.28 сот / 6 спален



1100 м² / 43.28 сот / 6 спален



СОСНОВЫЙ БОР

Рублево-Успенское шоссе, 23 км